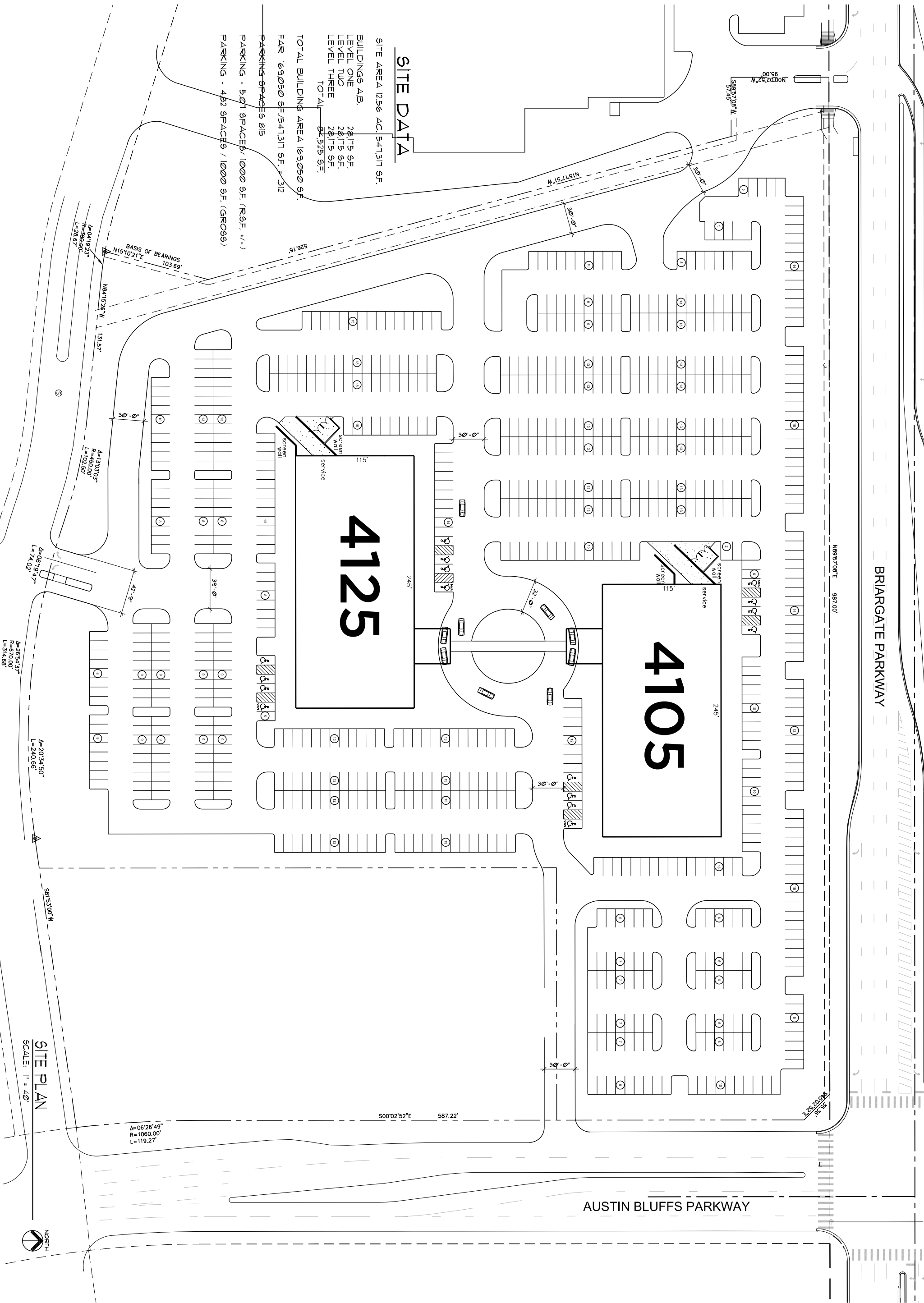


BRIARGATE PARKWAY

AUSTIN BLUFFS PARKWAY

SITE DATA

SITE AREA 1256 AC, 541311 S.F.
BUILDINGS A,B, 28,115 S.F.
LEVEL ONE 28,115 S.F.
LEVEL TWO 28,115 S.F.
LEVEL THREE 28,115 S.F.
TOTAL 84,325 S.F.
TOTAL BUILDING AREA 169,050 S.F.
FAR 169,050 S.F./541,311 S.F. = .312
PARKING SPACES 815
PARKING - 501 SPACES/ 1000 S.F. (R.S.F. +/-)
PARKING - 462 SPACES / 1000 S.F. (GROSS)



SITE PLAN

SCALE: 1" = 40'

4105 & 4125 Briargate Parkway